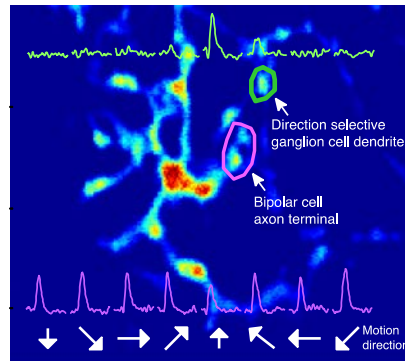
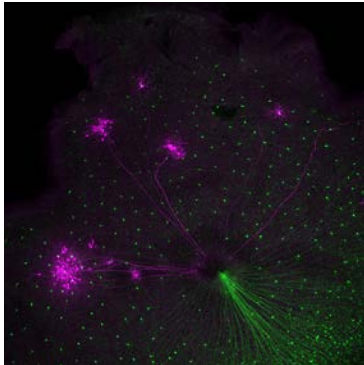


10th ISC Seminar

Topic

Motion-sensitive circuits in the retina



Speaker

Dr Keisuke Yonehara (Friedrich Miescher Institute)

Inferring the direction of image motion is a fundamental component of visual computation, and essential for visually guided behavior. Even at the front of the visual stream, in the retina, a number of parallel circuits extract information about motion. I perform cell-type-specific experiments to understand the development and function of direction-selective circuit in mouse retina. My talk will have two parts. First I show how and when spatially asymmetric synaptic connectivity, which is a key circuit module of direction-selective circuit, is established during development. Second I discuss the computational logic of direction selectivity, based on our recent study in which we recorded the concerted activity of the circuit elements of single direction-selective cells at subcellular resolution while these circuit elements were computing a specific task.

3rd September, at 5th seminar room in medical research building

2014年9月3日(水) 11:00-12:00

東京大学 医学部教育研究棟13階 第5会議室

世話人・連絡先: 秋光信佳 東京大学アイソトープ総合センター (akimitsu@ric.u-tokyo.ac.jp)

セミナー会場への案内図

